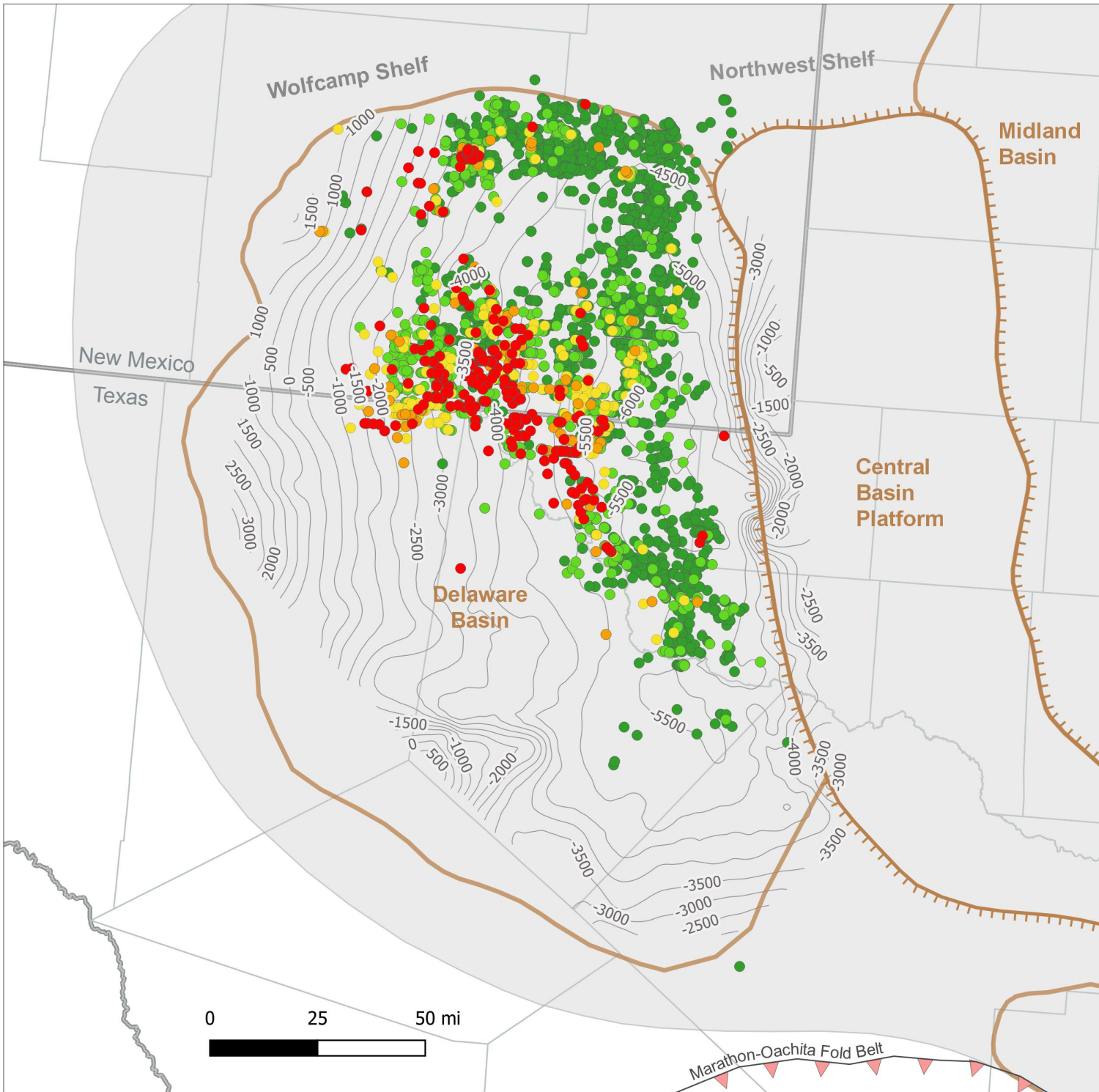


Bone Spring first year gas/oil ratio (GOR) for wells completed in 2005 through June 2019



Bone Spring wells initial 12 month gas/oil ratio (GOR) for wells completed in 2005-2019 (cubic feet per barrel)

- 0 - 3,000
 - 3,000 - 6,000
 - 6,000 - 9,000
 - 9,000 - 12,000
 - > 12,000
- Permian Basin
 - Elevation of Bone Spring formation top (feet)
 - ▼ Marathon-Oachita Fold Belt
- Sub-basins
- ▭ Central Basin Platform
 - ▭ Delaware and Midland Basins
 - Counties
 - States

Source: U.S. Energy Information Administration based on DrillingInfo Inc.

Note: EIA calculates the GOR for each well using the initial twelve contiguous months of liquid and gas production.

Updated: 7/25/2019

